



ESSENTIAL HOME<sup>®</sup>  
MID CENTURY FURNITURE

**PARIS IS ALWAYS A GOOD IDEA**  
& NOTHING DOES IT BETTER THAN OUR MONOCLES

BY ESSENTIAL HOME





## Paris is Always a Good Idea and Nothing Does It Better than our Monocles by Essential Home

From Audrey Hepburn Words "Paris is always a good idea." And especially now that we are a little bit obsessed with that Parisian *Je ne sais quoi* after **Maison & Objet**.

So, from all that passion and inspiration Somewhere in Clichy - in the 9th arrondissement of Paris - there is a stunning place that was the subject of a home makeover by interior design **studio 10surdix**, that almost looks like taken from a movie. This French team created an inspiring modern home filled with industrial accents and a mid-century sideboard that you won't ever forget.





In the center of this French movie there is an English star, as big as James Bond itself – Monocles Side Board.



This movie-inspired sideboard makes all the difference in the room. With dark walnut and gold plated brass finishes, this mid-century piece can light up a room all by itself. The monocles circles are engraved on the back and side of the unit, giving it a strong personality and high end look. It is a perfect piece of furniture for retro lovers or mid-century admirers, due to the knurling knobs on the drawers or the tapered legs.



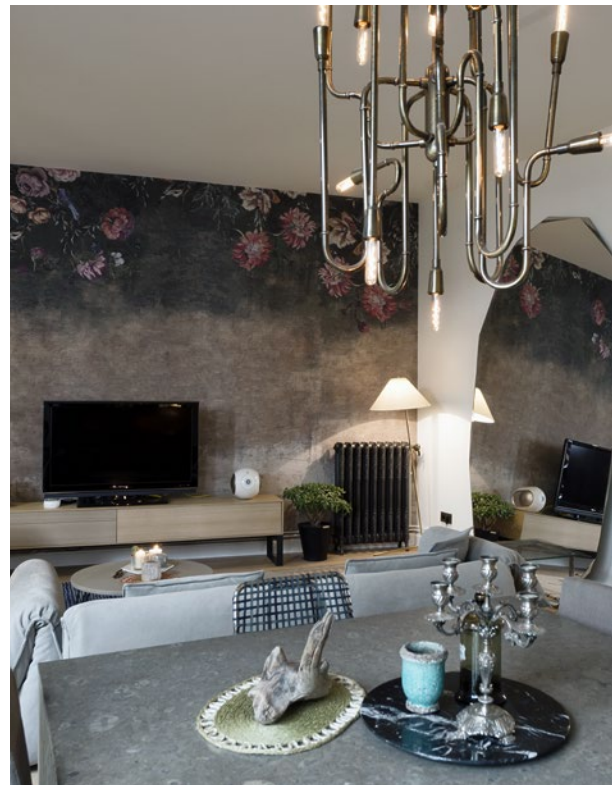
This Remodel Home, was entirely made by the French trio, the open plan living is very characteristic of industrial interiors. The more modern and slightly bohemian look was achieved not only by Essential Home's Monocles sideboard but also by DelightFull's minimalist Clark chandelier.







Deciding to use an oversized mirror simply placed against the wall they made a way to convey a relaxed vibe in such a wide space as this living room. The concrete wall behind the television was given a special touch with the hand painted flowers on the top.





The canopy between the master bedroom and the corridor was made especially for this sole purpose in the studios' workshops near Paris. The wall fixtures are also bespoke pieces by the mid-century lighting brand **DelightFull**, the Brubeck wall sconces.







---

## Essential Home - The brand

Essential Home is the epitome of bohemian retro design. It's midcentury modern lines merge important historical references from the 30's to the late 60's, with contemporary influences. From our designer, to our marketers and sales manager, together we want to assume our mission: to give you an endless experience of the 40's, 50's and the 60's with a reliable customer service to boost. Design. Innovation. Inspiration. These words are with us in everything we do.

---

### Joana Ferreira

Public Relations Manager:  
Europe, North America & India

[jferreira@essentialhome.eu](mailto:jferreira@essentialhome.eu)

### Ana Silva

Public Relations Associate:  
Rest of the World

[csilva@essentialhome.eu](mailto:csilva@essentialhome.eu)